

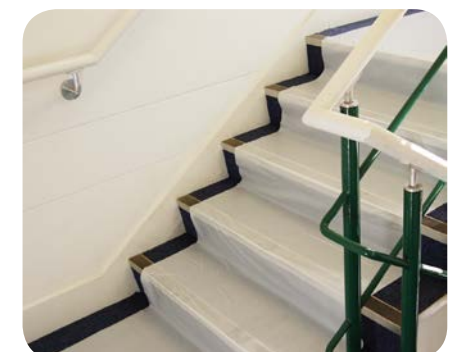
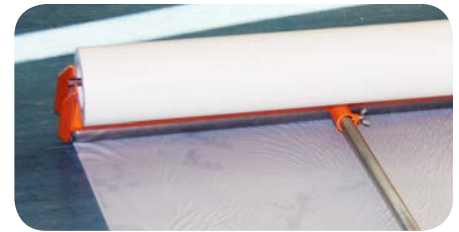
Carpet cover guard is a flame-retardant, transparent, extruded polyethylene texture film that features a new Supermatrix water-based adhesive. This is a reverse wound system which is easy to install, ensures the product remains firmly in place, yet is easy to remove. It is specifically designed for the protection of all types of carpets during new building, refit, maintenance and outfitting projects.

**Part Number: CG04200SATA**

### General Applications

Temporary protection for carpets on walkways, aisles, cabins, stairs and public areas.

Description		Self Adhesive, suitable for carpets only
Adhesive Backing		Quick clean release for easy installation and removal without adhesive transfer to protected carpet surface.
Finish		Flat sheeting
Colour		Transparent White
Material Weight	grams/ m <sup>2</sup>	85
Material Thickness	micron	80
Roll Width	m	1.0
	inches	39
Roll Length	m	100
	feet	330
Roll Area	m <sup>2</sup>	100
	feet <sup>2</sup>	1080
Roll Diameter	mm	145
Roll Weight	kilos approx	7.5



### Approvals & Testing

IMO Resolution A.653 (16)  
as amended by IMO MSC 61 (67)  
Annex 1; Part 5

Full test report  
available upon  
request

To ensure suitability we would recommend the product is first tested on the desired surface.