

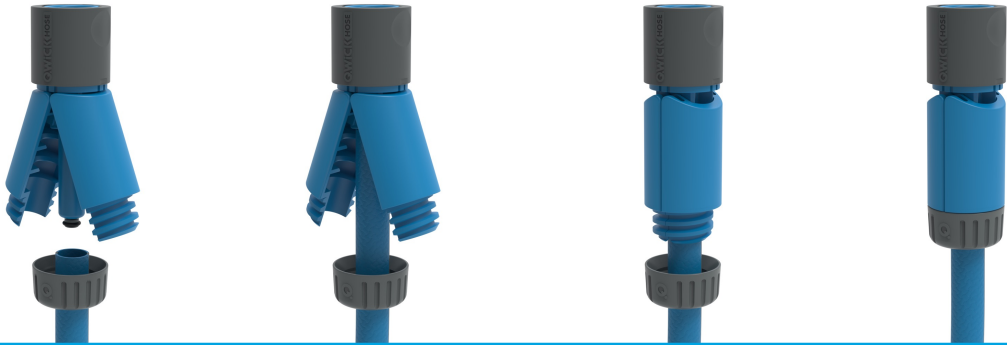
**Q.WiCK** HOSE

2023  
Catalogue





# Wing-Lock Hose Connectors



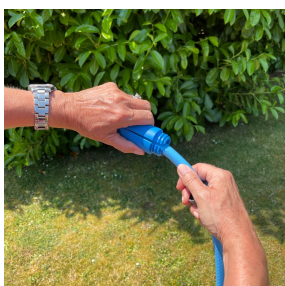
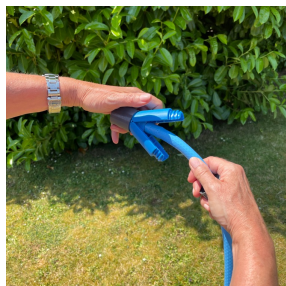
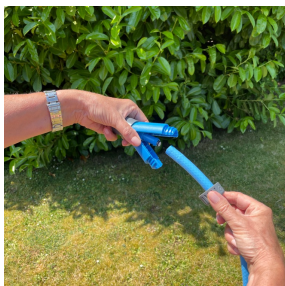
## 4 Simple Steps To A Perfect Connection

Qwickhose universal Wing-Lock Hose Connectors offer more hose grip and an easier connection than typical models resulting in less leakage, superior longevity and prevents pop-offs.

Our connectors swap the typical 'teeth' grip fitting for our revolutionary, wing-lock system. Simply push hosepipe completely over the inner tube, clamp wings shut and screw on nut to lock.

Qwickhose Connectors are universal meaning they are compatible with all existing watering attachments and fit on standard 1/2" garden hoses.

All Qwickhose products are made from UV stabilised premium grade plastics (ABS & PP) to preserve quality and reduce deterioration throughout use.



# Connectors & Fittings

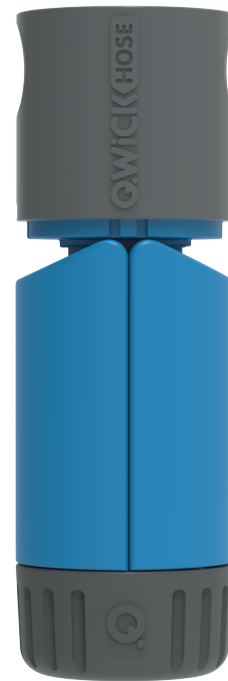
Hose Connectors

## The Original

Code: QWH-11-01-01

The Original connector is ideal for the tap end but can be used at either end of the hose.

- Wing-Lock Connection
- Superior hose grip
- Universal fitting for attachments
- Fits 1/2" hose
- UV Stabilised
- UK Made





# Connectors & Fittings

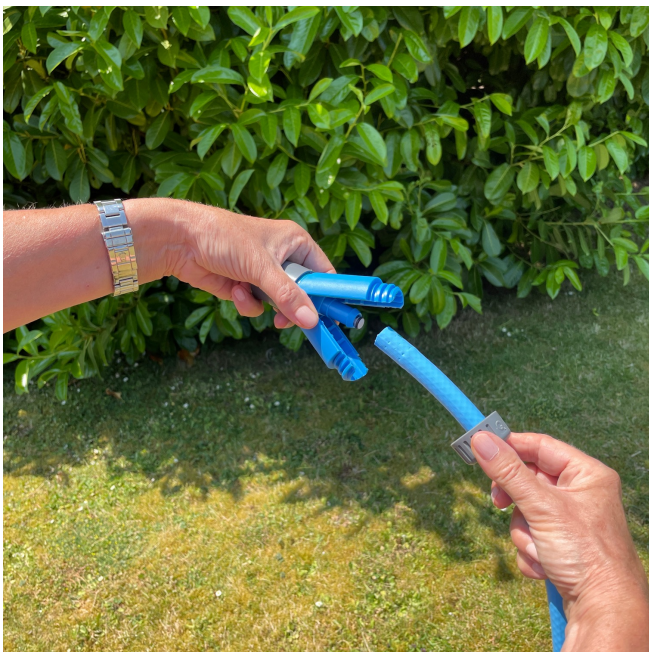
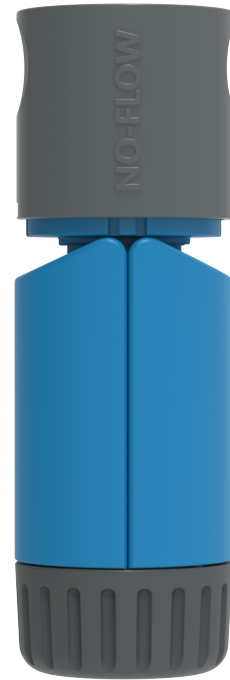
Hose Connectors

## The No-Flow

Code: QWH-11-01-02

All the benefits of the Original with an additional waterstop feature. The No-Flow Connector works best on the hose end with its pin to prevent water flow when changing attachments.

- Wing-Lock Connection
- Superior hose grip
- Waterstop valve
- Universal fitting for attachments
- Fits ½" hose
- UV Stabilised
- UK Made





# Connectors & Fittings

Tap Connectors

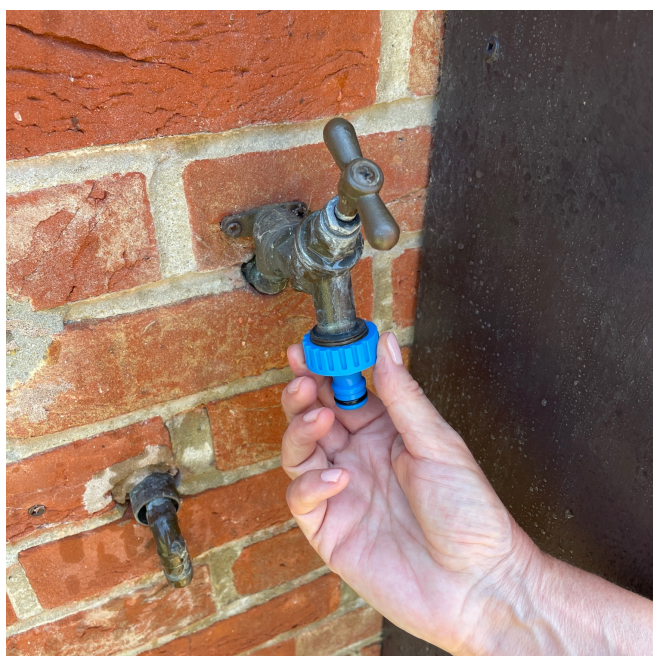
## 3/4" Tap Connector

Code: QWH-11-02-01

Screw on tap connector that allows for quick and easy connection between your hosepipe and outdoor tap.

Simply screw the tap connector on and you are good to go. A quality rubber washer helps create a snug fit to reduce dripping at the tap.

- Fits 3/4" BSP threaded outdoor taps.
- Universally Compatible
- UV Stabilised
- UK Made





# Connectors & Fittings

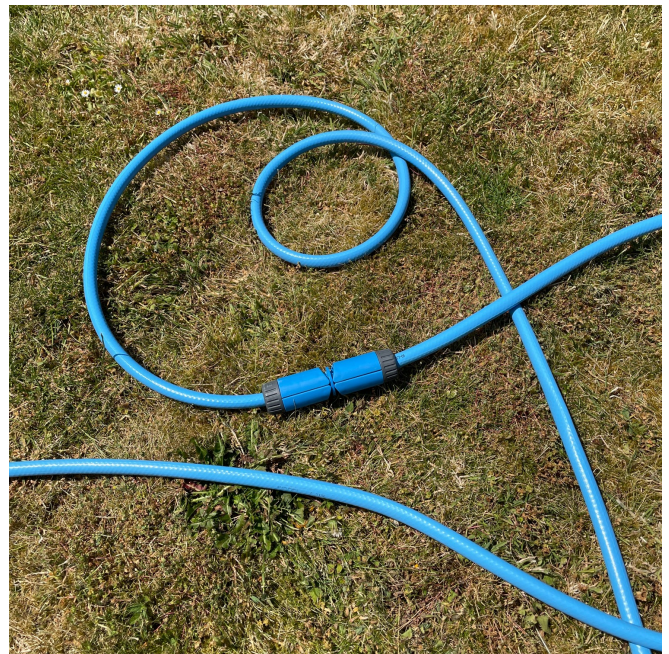
Repair/Joiners

## Hose Repair Connector

Code: QWH-11-03-01

Hose repair connector that can be used to repair damages and permanently extend hose pipes.

- Wing-Lock Connection
- Superior Hose Grip
- Fits 1/2" Hose
- UV Stabilised
- UK Made





# Connectors & Fittings

Repair/Joiners

## Double Male Joiner

Code: QWH-11-03-02

Double Male Joiner for extending lengths of hose. Used to join two hose connectors on the fly via universal fitting.

- Universally Compatible
- UV Stabilised
- UK Made



# Sets & Kits

Starter Sets

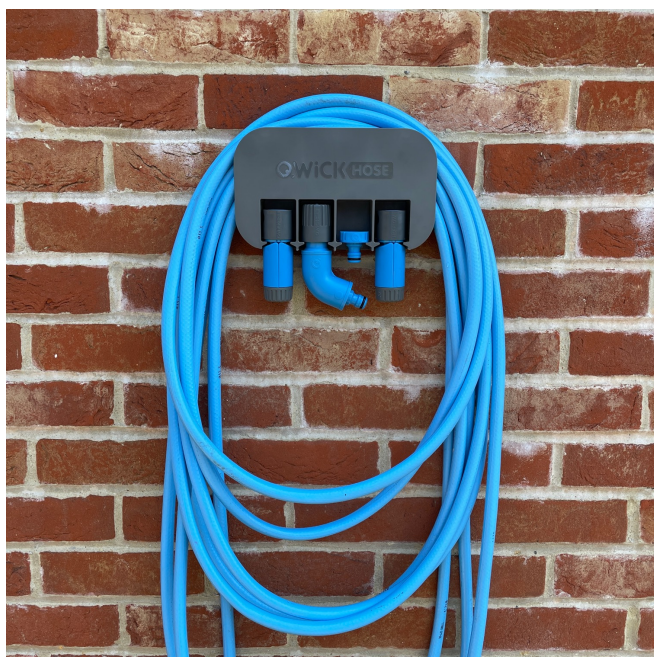
## Qwickhose Starter Set

Code: QWH-12-01-01

Our Qwickhose Starter Set contains all you need to kick off your Qwickhose experience. Offering high quality, user friendly products to assist with cleaning and gardening. The set includes our revolutionary patent-pending hose connectors, which offer more hose grip than leading brands resulting in less leakage and no pop-offs.

Set Includes: Wall Mount, Wing-Lock Connector, Nozzle Spray End, Tap Connector, No-Flow Wing-Lock Connector

- Fits 1/2" hose
- Universally Compatible
- 5 Piece Set
- UV Stabilised
- UK Made





# Nozzles & Sprayers

Nozzles

## Nozzle Spray End

Code: QWH-13-01-01

The ergonomic and compact Qwickhose® Nozzle Spray end is perfect for any watering or cleaning tasks.

There are three adjustable patterns of spray that can be utilised by twisting the nozzle: Mist, Shower and Jet. Water flow can also be shut off by closing the nozzle fully without having to turn off.

The nozzle is designed with a curve for comfort, providing enjoyable and fuss-free watering for everyone whether you're looking after your garden, cleaning a pet or washing a car.

- Universally Compatible
- 3 Spray Patterns
- UV Stabilised
- UK Made





# Mounts & Storage

Wall Mounts

## Wall Mount

Code: QWH-14-01-01

The wall mount provides a neat and tidy storage solution for all your Qwickhose accessories.

It has a compact but slick design that will look good in any outdoor space. The wall mount can be attached to wood and brickwork to give a sturdy mounting solution.

It also has the capacity to drape your garden hose over to help keep your outdoor space looking clean while protecting your hosepipe.

- Accessory & Hosepipe Storage
- Screw Mounted
- UV Stabilised
- UK Made





Rivendale Products Ltd  
Southampton, SO52 9DF

+44 (0) 23 8001 3548

[Qwickhose.co.uk](http://Qwickhose.co.uk)  
[hello@qwickhose.co.uk](mailto:hello@qwickhose.co.uk)